

**NECHAKO RIVER
CHINOOK CARCASS RECOVERY
2010**

NECHAKO FISHERIES CONSERVATION PROGRAM
Data Report No. M10-2

Prepared by:
Mark Potyrala and Byron Nutton
Fisheries and Oceans Canada
April 2011

TABLE OF CONTENTS

LIST OF TABLES

LIST OF FIGURES

LIST OF APPENDICES

ABSTRACT

INTRODUCTION

METHODS

RESULTS

DISCUSSION – COMPARISON TO PREVIOUS YEARS

ACKNOWLEDGEMENTS

REFERENCES

LIST OF TABLES

- Table 1. Nechako River Chinook Carcass Recovery by Section, 2010.
- Table 2. Nechako River Chinook Carcass Condition, 2010.
- Table 3. Nechako River Chinook Age Contribution (%) by Sex, 2010.
- Table 4. Nechako River Chinook Fecundity, 1978-2010.
- Table 5. Nechako River Chinook Egg Retention, 1988-2010.
- Table 6. Percent Contribution of Stream-type Life Histories to Nechako Chinook Escapements, 1988-2010.
- Table 7. Percent Contribution of Age-at-Return Groupings to Nechako Chinook Escapements, 1988-2010.

LIST OF FIGURES

- Figure 1. Nechako River Drainage.
- Figure 2. Nechako River Chinook Spawning Study Area.
- Figure 3. Nechako River Chinook Length Frequency Distribution, 2010.
- Figure 4. Nechako River Chinook Sex Ratio, 1988-2010.
- Figure 5. Nechako River Chinook Male Mean Length, 1988-2010.
- Figure 6. Nechako River Chinook Female Mean length, 1988-2010.
- Figure 7. Nechako River Chinook Mean Egg Retention, 1988-2010.

LIST OF APPENDICES

- Appendix 1. 2010 Nechako River Chinook Carcass Recovery Project: Field Data and Ageing Results.

ABSTRACT

In 2010 adult Chinook salmon (*Oncorhynchus tshawytscha*) carcasses were recovered from the Nechako River in order to collect biological data on sex, size, fecundity, egg retention, life history and age. This information contributes to the database being compiled under the auspices of the Nechako Fisheries Conservation Program to monitor the Nechako Chinook population.

A total of 200 carcasses were collected on the Nechako River between September 16th and October 4th. Nechako River Chinook carcasses recovered in 2010 exhibited biological characteristics variable to those collected from 1988 to 2009. The female to male ratio of the sample was the highest on record while the mean post-orbital hypural lengths for both males and females were among the lowest observed since 1988. In addition, mean egg retention for partially and completely spawned females was the 2nd lowest on record. The spawning population was almost exclusively comprised of individuals with a stream-type life history and dominated by the 4₂ age-class, whereas in most years the 5₂ age-class is dominant.

INTRODUCTION

Each year since 1988 the Nechako Fisheries Conservation Program (NFCP) Technical Committee has conducted a suite of projects to monitor the population of Chinook salmon (*Oncorhynchus tshawytscha*) that spawn and rear in the Nechako River. The goal of these projects is to provide the information necessary for the NFCP to assess whether or not the Conservation Goal identified in the 1987 Settlement Agreement (Anon, 1987) is being met.

As part of this program of studies to monitor Nechako River Chinook salmon, the Technical Committee has conducted a carcass recovery project on the Nechako River each year. The purpose of this project is to gather biological data on adult spawners, including: sex, size, fecundity, egg retention, life history and age. In particular, analysis of fish age indicates the relative contribution of each brood year to the current years' spawning population, which is used to interpret the results of the annual NFCP enumeration project.

In the past, the information collected from the Nechako River has been compared to similar information collected from the Stuart River, an adjacent system unaffected by flow regulation (Figure 1), to assist in identifying potential effects of flow regulation on the Nechako Chinook population. As no obvious trends or anomalies were identified over the initial 18 years of the study history (1988-2005), it was decided by the NFCP Technical Committee that the continuation of the annual Stuart River component was not necessary. The annual Stuart River study component may be restarted in the future if deemed necessary.

METHODS

Sampling was conducted throughout the period of Chinook spawner die-off, normally from mid-September to early October.

In the Nechako River, sampling was conducted from Cheslatta Falls downstream to Vanderhoof (Figure 2). In order to ensure a representative sample, recovery effort was based on spawner distribution observed during helicopter surveys conducted as part of the concurrent enumeration project. The normal Nechako River target sample size is 200 fish.

Several sampling surveys were conducted throughout the period of die-off to ensure that both early and late spawners were represented in the samples. The survey was conducted by running a jet boat downstream at low speed and recovering carcasses with a gaff. If the carcass was too badly decomposed or eaten by animals to measure body length or take scale samples, it was cut in half to prevent re-counting and returned to the river. Each carcass was assigned a number and its location and date of recovery recorded. When a sufficient number of carcasses had been collected, the crew stopped to collect the following samples and biological information:

- **sex:** The sex of each fish was determined based on morphology, and confirmed by abdominal incision and internal examination.
- **condition:** Carcass condition was recorded as: 1) fresh; 2) fair to good; 3) poor with some fungus; or 4) partially decomposed but still able to be sampled. In addition, other observations were recorded, particularly the presence of net scars or lamprey marks.
- **post-orbital hypural length (POHL):** The distance from the posterior margin of the orbit to the flexure of the hypural plate in the caudal peduncle was recorded to the nearest millimeter.
- **egg retention and fecundity:** The body cavities of females were checked for eggs. All eggs were counted unless the number was greater than 1000, in which case they were estimated volumetrically. In the case of under-developed eggs which could not be separated and counted, the sample was recorded as a pre-spawn mortality with fully skeined eggs.
- **scales:** Ten scales were taken from each processed carcass and stored in gummed, pre-numbered scale books. Five scales were taken from each side of the body in the preferred area (several rows above the lateral line between the posterior end of the dorsal fin and the anterior insertion of the anal fin). Care was taken to avoid regenerated, resorbed and irregular shaped scales. Fish age was later determined by analysis of the scales, conducted by staff at Fisheries and Oceans Canada (DFO) laboratory facilities.
- **adipose fin:** A missing adipose fin is evidence of a hatchery raised fish with a coded-wire tag implanted in its head. If the fin was missing, the head was removed and sent to an independent laboratory for tag removal and identification.

All processed carcasses were cut in half to prevent recounting and returned to the river.

RESULTS

Data collected from each Chinook carcass sampled in the Nechako River in 2010 are presented in Appendix 1. Summaries of this data are provided in the respective sections below.

Between September 16th and October 4th a total of 200¹ carcasses were sampled from 6 of the 16 identified Sections representing all 3 river areas – upper, middle and lower river (Table 1). The observed sex ratio was 2.70 F/M, or 73% females and 27% males (n=200). In addition, three Chinook jacks were collected. Of the carcasses sampled, 71% were fresh or only a few days old while all but 4 of the remaining samples were determined to be in poor condition with some fungus (Table 2).

The length (POHL) of the fish sampled ranged from 354 to 870 mm, with a mean of 671 mm (n=54, SD=84) for males, 640 mm (n=146, SD=46) for females and 648 mm (n=200, SD=60) for all fish combined. For males, the majority of individuals sampled were between 601-700 mm in length while the majority of females were between 551-700 mm long (Figure 3).

Of the total number of female carcasses sampled (n=146), three were found to be fully skinned pre-spawn mortalities, with skeins too undeveloped to allow for egg retention estimates. No samples were determined to be partially spawned, based on an estimated retention value of between 1000 and 4999 eggs. Fully spawned females, with estimated egg retentions of less than 1000, accounted for a majority (>99%) of the readable sample. The mean egg retention of fully and partially spawned females was 8 eggs (n=143, SD=52, range 0–590).

Scale samples from 200 carcasses recovered from the Nechako River were sent to the Pacific Biological Station in Nanaimo for age analysis. Complete ages were determined for 183 of those samples (Table 3). The results indicate that the majority of sampled fish were of two age-classes, 5₂ (11%) and 4₂ (85%). A chi-square test was used to determine that the numbers of males and females in these age-classes were significantly disproportionate to the sex ratio of the sample (p=0.04).

¹ Any discrepancy between the total number of carcasses sampled and the reported number of carcasses for various parameters is due to the fact that only partial data were recorded for some carcasses. However, all carcasses were maintained in the dataset and any partial data that was recorded was used in the appropriate analyses.

One of the recovered Chinook was thought to have an adipose fin missing, but no other form of marking or tagging was observed.

DISCUSSION - COMPARISON TO PREVIOUS YEARS

A comparison of 2010 Nechako River Chinook carcass recovery data was made to data collected by the NFCP each year since 1988 (NFCP M88-4 and M89-2 to M09-2). Although some limited data were collected prior to 1988 it was not deemed necessary to include these data in the comparison, since information has been collected by the NFCP for several years using standardized methods and study areas. The exception is the discussion on fecundity which includes data collected prior to the inception of the NFCP. This exception was made because the prior data adds substantially to the available dataset due to the paucity of information regarding Nechako River Chinook female fecundity.

The observed sex ratio of 2.70 F/M is the highest on record and much higher than the existing range (1.10-2.28) observed from 1988-2009 (Figure 7), and the mean of 1.59 (n=22, SD=0.30), as indicated by 95% confidence limit of 1.46-1.71.

When comparing the 2010 mean length (POHL) of both males and females to observations from previous years the values for both males and females are among the lowest on record (Figures 5 and 6), likely a result of the anomalously dominant 4 year-old component of the returning population.

With no new un-spawned egg retention data in 2010 the average fecundity of Nechako River female Chinook remained at 6550 eggs per fish (Table 4) based on egg retention estimates of unspawned females collected since 1978. Although no further analysis of this statistic is conducted for this report, this value may contribute to other aspects of the NFCP monitoring projects, particularly the estimates of egg-to-fry survival.

The mean egg retention in fully and partially spawned carcasses was compared to values from previous years (Table 5). The 2010 mean is the 2nd lowest value when compared to historic data (Figure 7).

The Nechako River Chinook spawning population is almost exclusively comprised of individuals that spend one or more years as a fry or parr in fresh water before migrating out to the ocean (stream-type life history), and is dominated by 4₂ and 5₂ age-classes. These have been consistent observations since the inception of the NFCP monitoring program. In 2010, age-classes 4₂ and

52 accounted for 96% of the return (n=183), with all stream-type fish accounting for 98% of the sample (Table 6).

In addition to identifying life history strategies, age data combined with the current years' escapement estimate are used to determine the relative success of past brood years in generating subsequent returns to the river. Since this analysis requires the results of several years, age-at-return data since the inception of the NFCP is documented in Table 7 to facilitate the discussion in the Nechako River Chinook Enumeration report (NFCP M10-1).

ACKNOWLEDGMENTS

Nechako River carcass recovery was conducted by the Carrier Sekani Tribal Council and Colin Barnard.

Staff at DFO's Pacific Biological Station in Nanaimo analyzed the various samples.

REFERENCES

- Anonymous. 1987. Settlement Agreement between Alcan Aluminum Ltd., the Minister of Fisheries and Oceans and the Minister of Energy, Mines and Petroleum. Signed September 14, 1987 in Vancouver, BC.
- Fee, P. and M. Sheng. 1978. Nechako River Chinook Fry and Spawning Survey. Unpublished manuscript prepared by Department of Fisheries and Oceans, Vancouver, BC.
- Jaremovic, L. and D. Rowland. 1988. Review of Chinook Salmon Escapements in the Nechako River, British Columbia. Canadian Manuscript Report of Fisheries and Aquatic Sciences No. 1963.
- NFCP. Nechako and Stuart Rivers Chinook Carcass Recovery 1988 to 2004. Nechako Fisheries Conservation Program Data Reports M88-4 and M89-2 to M04-2.
- Olmsted, W.R., M. Whelan and G.A. Vigers. 1980. 1979 Investigations of Fall Spawning Chinook Salmon (*Oncorhynchus tshawytscha*), Nechako and Quesnel/Horsefly Rivers, B.C. Prepared by E.V.S. Consultants Ltd. North Vancouver, B.C. for the Department of Fisheries and Oceans.
- Russell, L.R., K.R. Conlin, O.K. Johansen and U. Orr. 1983. Chinook Salmon Studies on the Nechako River: 1980, 1981, 1982. Canadian Manuscript Report of Fisheries and Aquatic Sciences No. 1728.

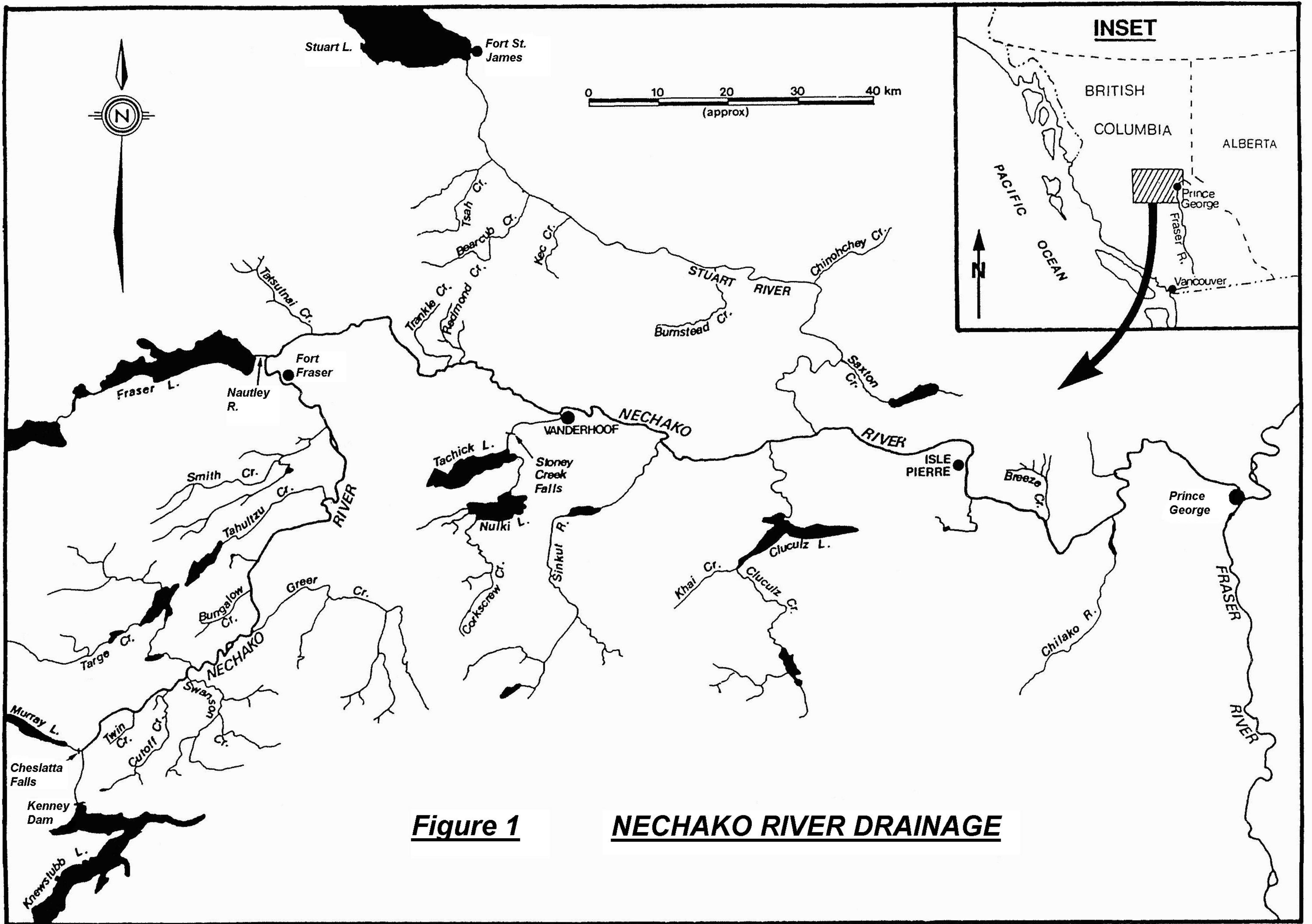
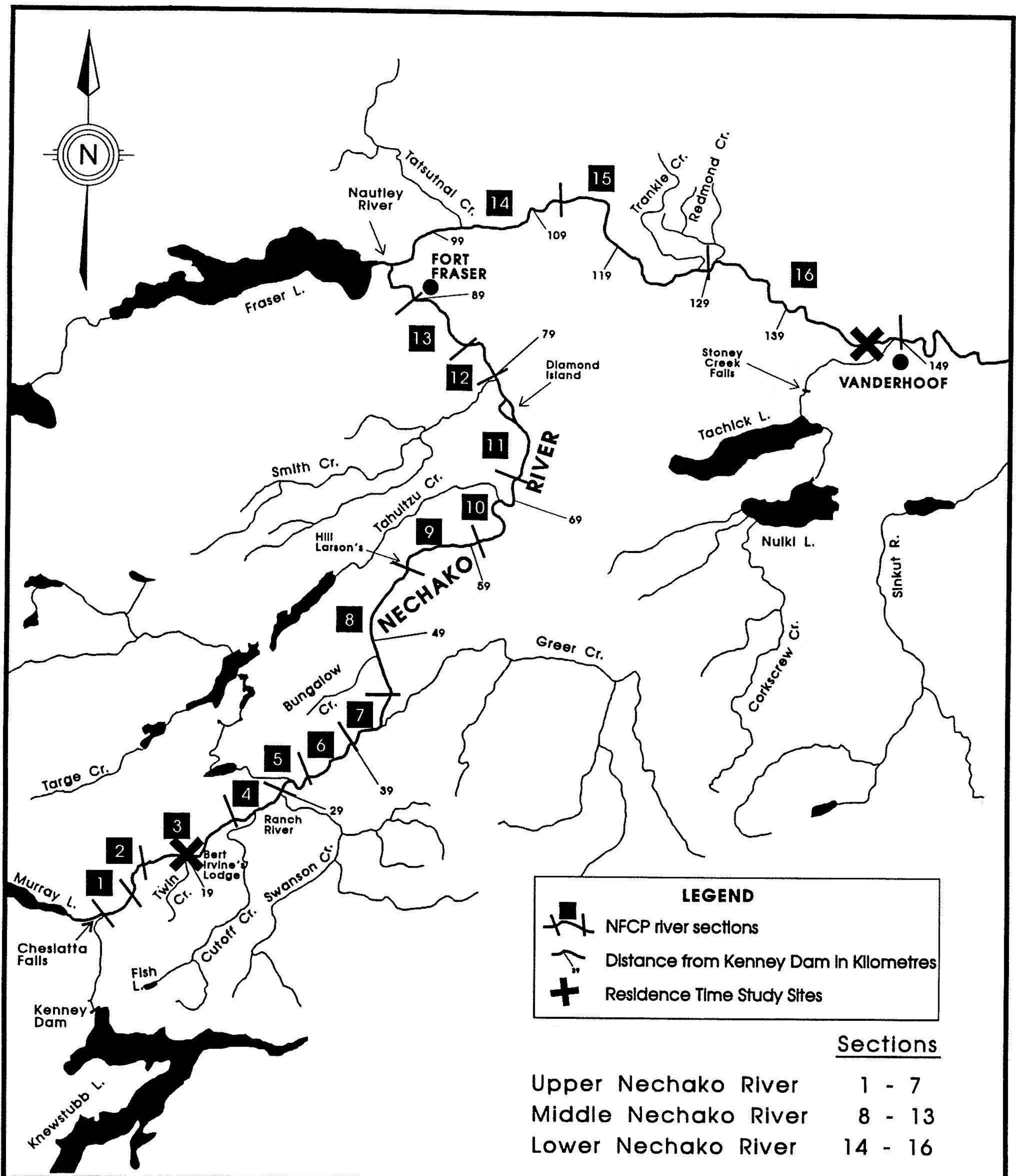


Figure 1

NECHAKO RIVER DRAINAGE



Nechako Fisheries Conservation Program

0 25 km



FIGURE 2. NECHAKO RIVER CHINOOK SPAWNING STUDY AREA

Figure 3
Nechako River Chinook Length Frequency Distribution, 2010

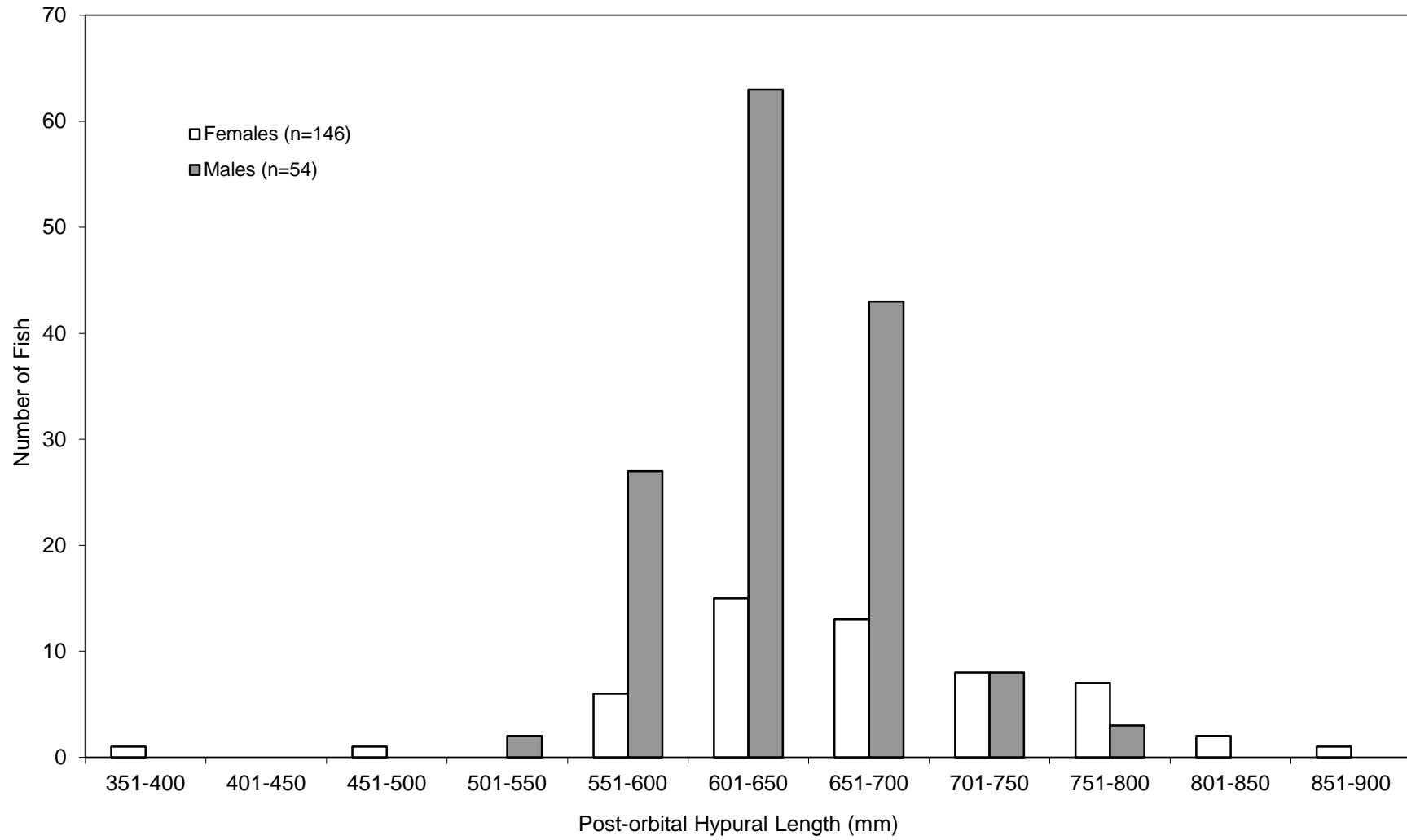


Figure 4
Nechako River Chinook Sex Ratio, 1988-2010

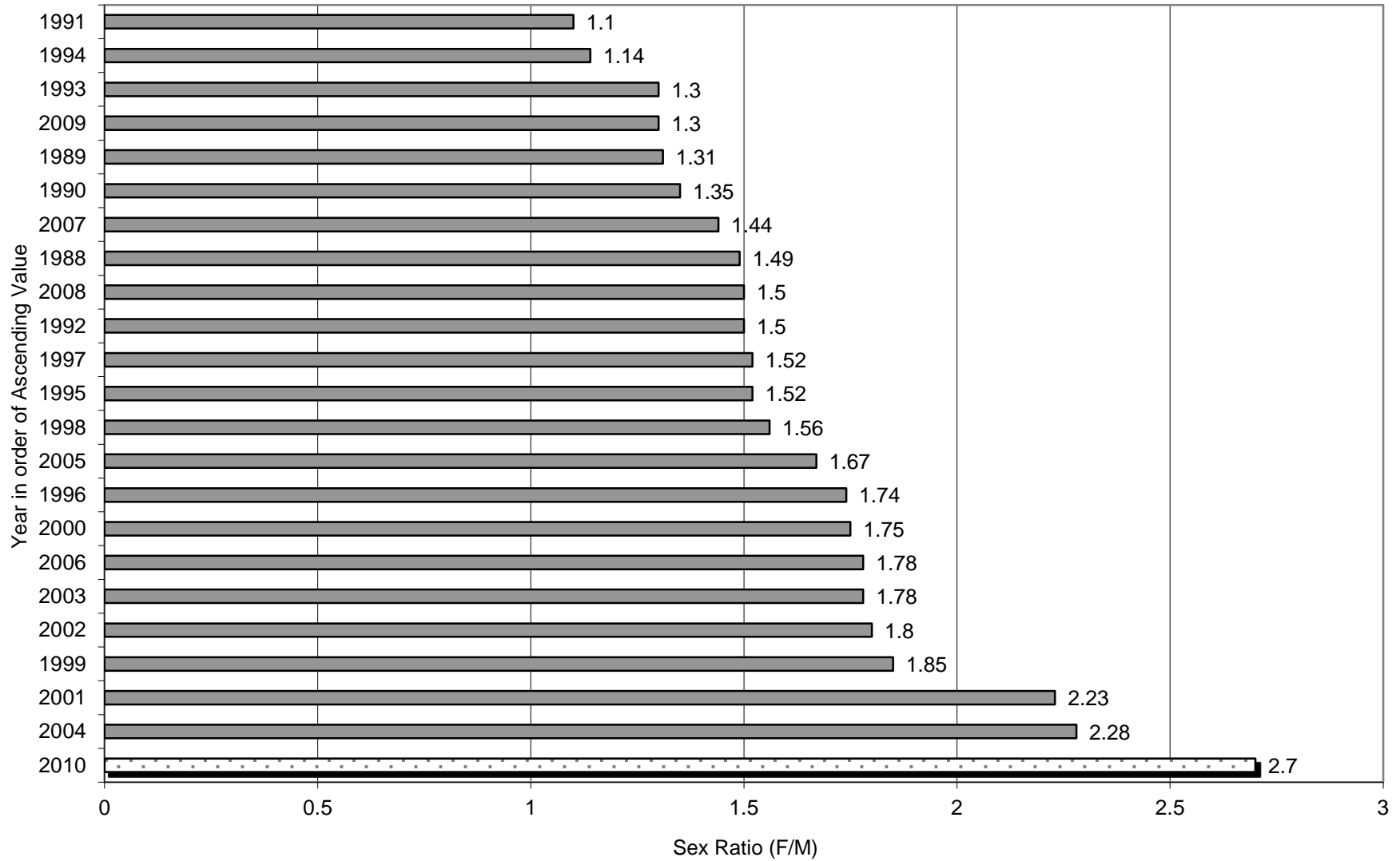


Figure 5
Nechako River Chinook Male Mean Length, 1988-2010

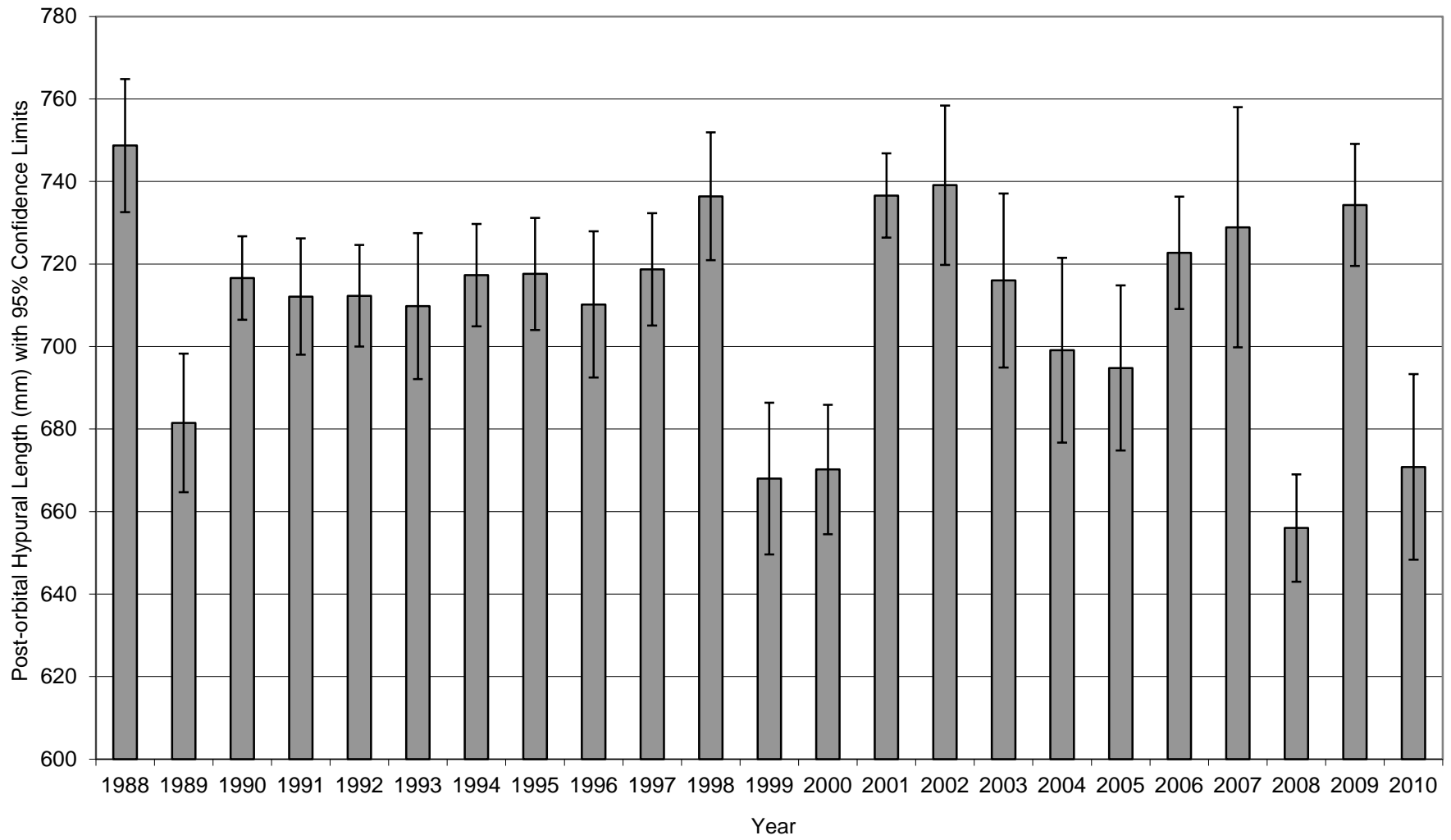


Figure 6
Nechako River Chinook Female Mean Length, 1988-2010

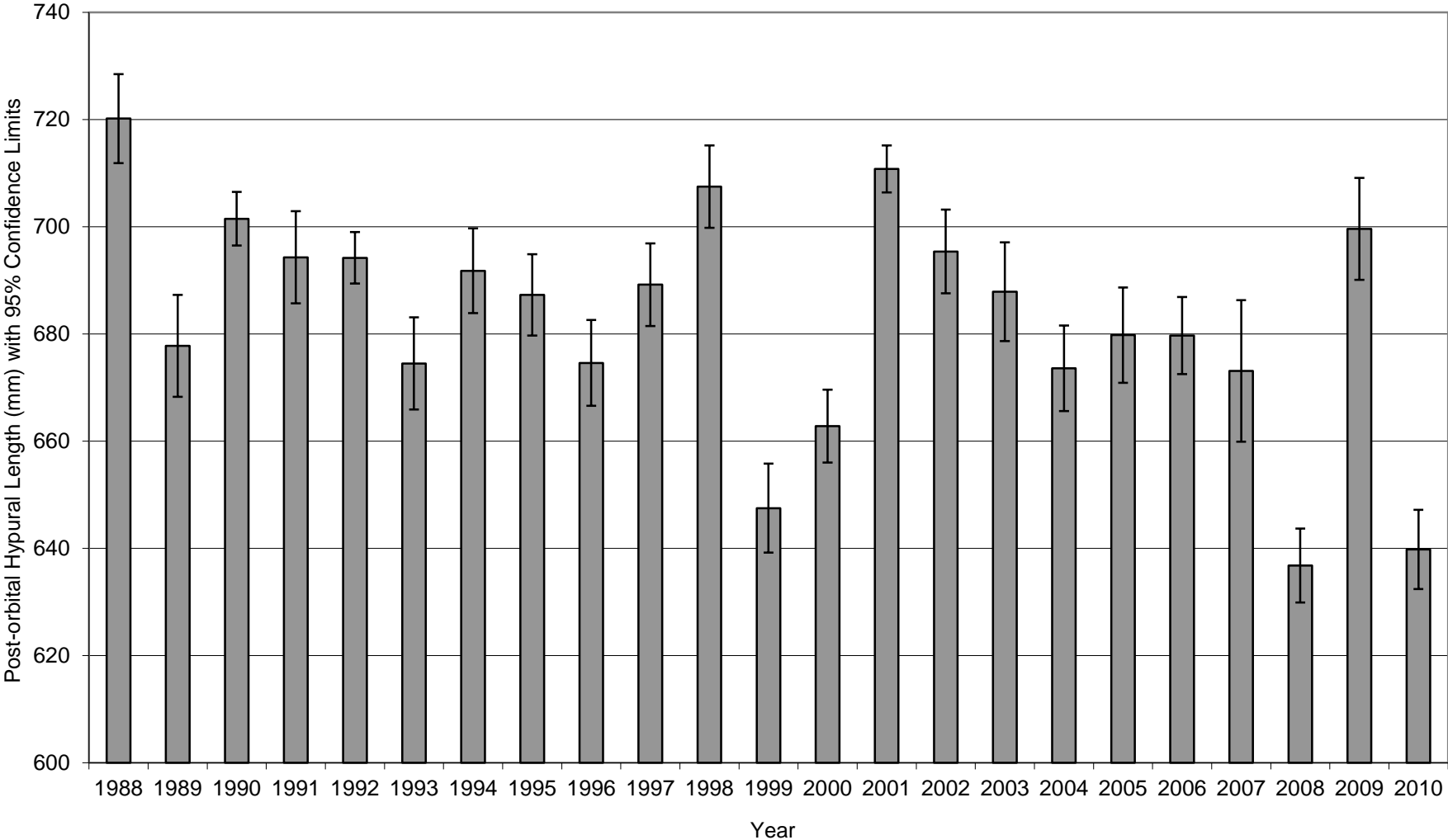


Figure 7
Nechako River Chinook Mean Egg retention, 1988-2010

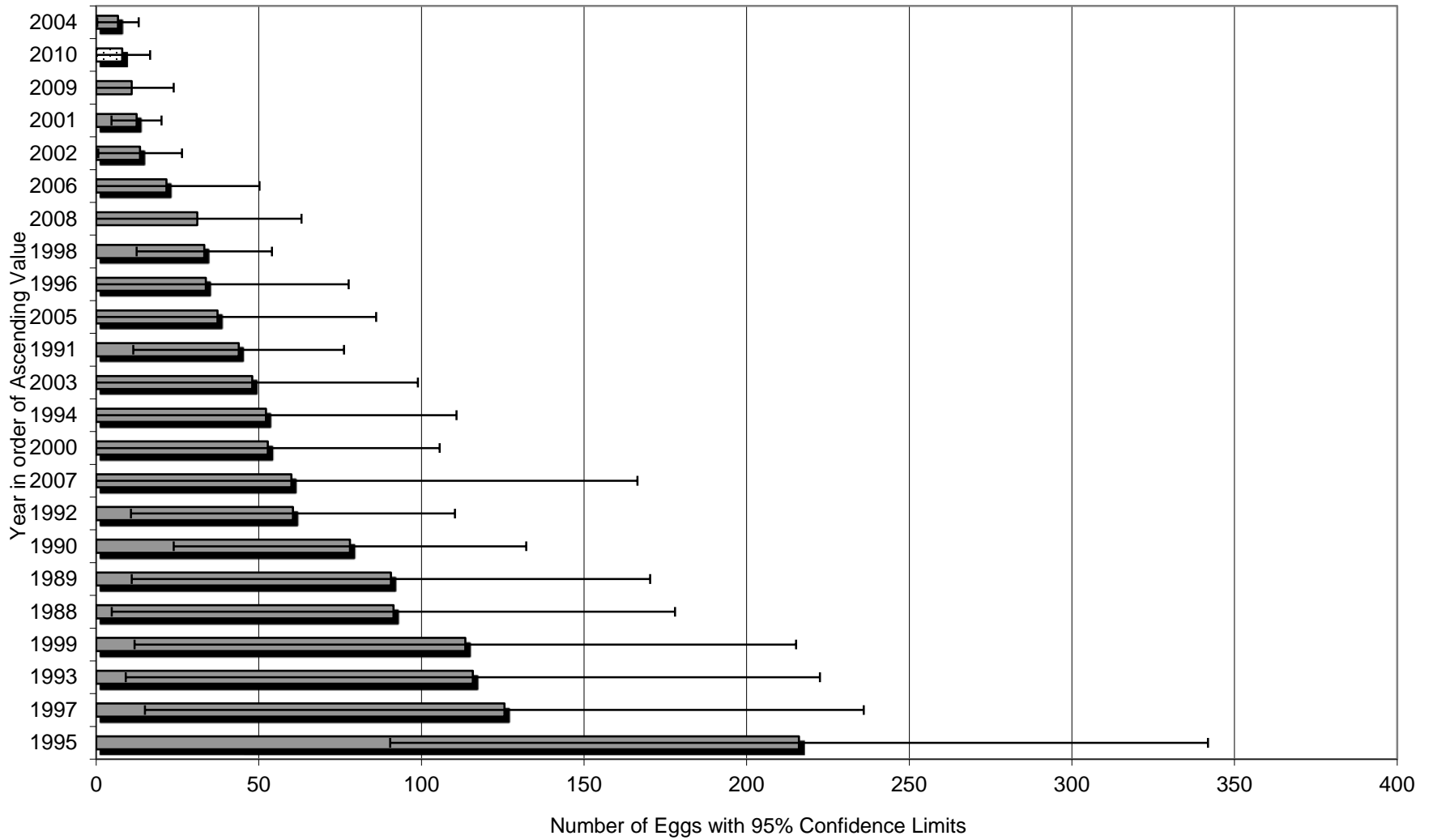


Table 1
Nechako River Chinook Carcass Recovery by Section, 2010

Section	Number	Percent
UPPER NECHAKO		
Section 1	0	0.0
Section 2	0	0.0
Section 3	78	39.0
Section 4	28	14.0
Section 5	0	0.0
Section 6	0	0.0
Section 7	0	0.0
SUB-TOTAL	106	53.0
MIDDLE NECHAKO		
Section 8	0	0.0
Section 9	0	0.0
Section 10	0	0.0
Section 11	31	15.5
Section 12	28	14.0
Section 13	0	0.0
SUB-TOTAL	59	29.5
LOWER NECHAKO		
Section 14	0	0.0
Section 15	10	5.0
Section 16	25	12.5
SUB-TOTAL	35	17.5
TOTAL RIVER	200	100.0

Table 2
Nechako River Chinook Carcass Condition, 2010

Condition *	Number	Percent
1	73	36.5
2	68	34.0
3	55	27.5
4	4	2.0
TOTAL	200	100.0

* Carcass Condition

1 - Fresh carcass

2 - Fair to good carcass (2 - 3 days old)

3 - Poor carcass condition with some fungus

4 - Very old and decomposed carcass

Table 3
Nechako River Chinook Age Composition (%) by Sex, 2010

	4-1	4-2	5-2	6-2	Total # Aged
Males	2.0	74.0	18.0	0.0	50
Females	1.5	89.5	8.3	0.0	133

Table 4
Nechako River Chinook Fecundity, 1978-2010

Year	Post-orbital Hypural Length (mm)	Fecundity (eggs/female)	Sources*	Cumulative Mean
1978	684	5250	1	
1978	663	6305	1	
1979	703	7200	2	
1979	611	5313	2	
1979	611	5284	2	
1980	710	5000	3	
1980	710	5000	3	
1985	760	6800	4	5769
1989	733	6073		
1989	695	5831		
1989	720	5500		
1989	730	5065		5718
1990	760	8831		
1990	730	7040		6035
1991	715	7289		
1991	710	6901		
1991	670	5714		6141
1992	680	7395		
1992	705	7111		6258
1993	690	6848		
1993	630	5705		
1993	720	5575		6229
1995	706	6750		
1995	712	5109		6204
1998	751	10026		
1998	745	9473		
1998	765	8216		
1998	712	6437		6537
2001	642	7280		6563
2009	574	6180		6550

*Sources: 1 = Fee and Sheng (1978),
2 = Olmsted *et al.* (1980),
3 = Russell *et al.* (1983), and
4 = Jaremovic and Rowland (1988)

Table 5
Nechako River Chinook Egg Retention, 1988-2010

Year	Fully Spawned			Partially Spawned		Fully + Partially
	n	range	mean	n	range	mean
1988	123	0-500	11.5	4	1000-4320	91.4
1989	144	0-757	21.5	3	2760-3960	90.6
1990	226	0-982	40.7	2	4066-4503	78
1991	154	0-732	22.4	2	1383-2005	43.8
1992	219	0-862	20.2	3	1484-4021	60.5
1993	100	0-529	32.8	3	1045-4686	115.8
1994	90	0-249	10.7	2	1565-2272	52.2
1995	144	0-899	38.3	8	1613-4600	216.1
1996	166	0-212	5.8	2	1100-3600	33.7
1997	127	0-326	13.1	4	2700-4081	125.5
1998	124	0-849	33.2	0	n/a	33.2
1999	129	0-389	9.2	4	3100-4000	113.5
2000	153	0-965	10.9	3	1366-3500	52.8
2001	274	0-636	12.4	0	n/a	12.4
2002	133	0-813	13.5	0	n/a	13.5
2003	125	0-696	15.7	2	1100-3032	48
2004	139	0-417	6.7	0	n/a	6.7
2005	123	0-584	13.2	1	3000	37.3
2006	127	0-450	7.5	1	1803	21.6
2007	57	0-175	5.8	1	3150	60
2008	118	0-804	17.4	1	1645	31.1
2009	110	0-690	10.9	0	n/a	10.9
2010	143	0-590	8	0	n/a	8

Table 6
 Percent Contribution of Stream-type Life Histories
 to Nechako Chinook Escapements, 1988-2010

Year	% Contribution		Sample Size
	4-2 + 5-2	All Stream-type	
1988	80	99	210
1989	81	97	200
1990	80	98	225
1991	68	96	210
1992	90	99	200
1993	85	100	188
1994	88	100	172
1995	97	99	207
1996	87	99	211
1997	96	100	206
1998	97	99	207
1999	95	100	204
2000	97	100	250
2001	99	100	180
2002	93	98	178
2003	96	100	164
2004	98	100	169
2005	95	100	170
2006	95	96	184
2007	79	96	70
2008	93	94	177
2009	95	98	171
2010	96	98	183

Table 7
 Percent Contribution of Age-at-Return Groupings
 to Nechako Chinook Escapements, 1988-2010

Year	% Contribution					Sample Size
	3 years	4 years	5 years	6 years	7 years	
1988	0.0	9.0	72.4	18.6	0.0	210
1989	1.0	30.0	52.5	15.5	1.0	200
1990	0.0	5.3	76.0	17.3	1.3	225
1991	1.0	16.7	54.3	25.7	2.4	210
1992	1.0	7.0	84.0	8.0	0.0	200
1993	0.0	13.3	71.8	14.9	0.0	188
1994	0.0	11.0	76.7	11.0	1.2	172
1995	0.0	14.0	84.5	1.4	0.0	207
1996	0.0	40.8	49.8	9.5	0.0	211
1997	0.0	20.9	75.7	3.4	0.0	206
1998	0.0	24.6	73.4	1.9	0.0	207
1999	0.5	44.1	51.0	4.4	0.0	204
2000	0.0	64.8	32.4	2.8	0.0	250
2001	0.0	11.1	88.3	0.6	0.0	180
2002	0.6	22.5	73.0	3.9	0.0	178
2003	1.2	31.1	65.2	2.4	0.0	164
2004	0.6	37.3	60.9	1.2	0.0	169
2005	0.6	27.1	67.6	4.7	0.0	170
2006	0.0	19.6	79.3	1.1	0.0	184
2007	1.4	14.3	68.6	12.9	2.9	70
2008	0.6	92.1	6.2	1.1	0.0	177
2009	1.8	23.4	74.9	0.0	0.0	171
2010	1.6	86.9	10.9	0.5	0.0	183

Appendix 1 Nechako Carcass Data

Fish #	Date	Reach	Sex	Condition	POHL (mm)	# Eggs Retained	Fish Sample	Age (Gilbert-Rich)	Comments
1	16-Sep-2010	3.2	F	1	598	0	79351 1	42	
2	16-Sep-2010	3.2	M	1	677		79351 2	42	
3	16-Sep-2010	3.2	F	1	638	Unspawned	79351 3	42	Totally skinned, liver full of pustules
4	16-Sep-2010	3.2	M	3	654		79351 4	42	
5	16-Sep-2010	3.2	M	2	631		79351 5	42	
6	16-Sep-2010	3.2	F	1	552	0	79352 1	42	
7	16-Sep-2010	3.2	F	3	647	27	79352 2	42	
8	16-Sep-2010	4	M	2	752		79352 3	52	
9	16-Sep-2010	4	M	1	605		79352 4	42	
10	16-Sep-2010	4	F	3	684	Unspawned	79352 5	42	Totally skinned, pre-mort
11	16-Sep-2010	4	M	3	633		79353 1	42	
12	19-Sep-2010	11	M	2	804		79353 2	52	NF - 1050 mm
13	19-Sep-2010	11	F	3	554	0	79353 3	2M	
14	19-Sep-2010	11	F	1	594	0	79353 4	42	
15	19-Sep-2010	11	F	2	615	0	79353 5	42	
16	19-Sep-2010	11	F	1	616	0	79354 1	42	
17	19-Sep-2010	11	M	2	598		79354 2	42	
18	20-Sep-2010	11	F	3	684	0	79354 3	52	
19	20-Sep-2010	12	F	2	672	0	79354 4	42	
20	20-Sep-2010	12	M	3	781		79354 5	52	
21	20-Sep-2010	12	F	4	638	0	79355 1	42	
22	20-Sep-2010	12	M	2	617		79355 2	42	
23	20-Sep-2010	12	M	3	726		79355 3	41	
24	20-Sep-2010	12	F	1	778	0	79355 4	41	
25	20-Sep-2010	12	M	1	715		79355 5	42	
26	20-Sep-2010	12	F	2	622	0	79356 1	42	
27	20-Sep-2010	12	F	1	627	0	79356 2	42	
28	20-Sep-2010	12	M	1	648		79356 3	42	
29	20-Sep-2010	12	M	2	643		79356 4	42	
30	20-Sep-2010	12	F	1	624	17	79356 5	42	
31	20-Sep-2010	12	F	1	631	2	79357 1	42	
32	20-Sep-2010	12	F	1	618	2	79357 2	42	
33	20-Sep-2010	12	F	2	642	0	79357 3	42	
34	20-Sep-2010	12	F	1	660	0	79357 4	42	
35	20-Sep-2010	12	F	2	673	0	79357 5	41	

Fish #	Date	Reach	Sex	Condition	POHL (mm)	# Eggs Retained	Fish Sample	Age (Gilbert-Rich)	Comments
36	22-Sep-2010	15	F	1	557	6	79358 1	42	
37	22-Sep-2010	15	M	2	597		79358 2	42	
38	22-Sep-2010	15	M	2	780		79358 3	52	
39	22-Sep-2010	15	M	2	763		79358 4	S2	
40	22-Sep-2010	15	F	1	645	0	79358 5	42	
41	22-Sep-2010	15	F	1	624	2	79359 1	42	
42	22-Sep-2010	15	M	1	658		79359 2	42	
43	22-Sep-2010	15	F	2	673	5	79359 3	42	Hole pecked in side
44	22-Sep-2010	15	F	2	585	4	79359 4	2M	
45	22-Sep-2010	15	M	1	638		79359 5	42	
46	25-Sep-2010	16	M	1	585		79360 1	42	
47	25-Sep-2010	16	F	1	596	0	79360 2	42	
48	25-Sep-2010	16	M	3	685		79360 3	42	
49	25-Sep-2010	16	F	1	680	3	79360 4	63	
50	25-Sep-2010	16	F	3	650	20	79360 5	42	
51	25-Sep-2010	16	F	2	606	2	79361 1	42	
52	25-Sep-2010	16	F	1	692	1	79361 2	52	
53	25-Sep-2010	16	F	1	663	0	79361 3	42	
54	25-Sep-2010	16	F	1	587	1	79361 4	42	
55	25-Sep-2010	16	F	1	600	164	79361 5	42	
56	25-Sep-2010	16	F	3	628	0	79362 1	42	
57	25-Sep-2010	16	F	1	656	11	79362 2	42	
58	25-Sep-2010	16	M	1	766		79362 3	52	
59	25-Sep-2010	16	M	1	715		79362 4	S2	
60	25-Sep-2010	16	F	2	646	8	79362 5	42	
61	27-Sep-2010	3.1	F	1	639	0	79363 1	42	
62	27-Sep-2010	3.1	M	3	615		79363 2	42	
63	27-Sep-2010	3.1	F	1	588	0	79363 3	42	
64	27-Sep-2010	3.1	F	2	624	3	79363 4	42	
65	27-Sep-2010	3.1	F	1	631	132	79363 5	42	
66	27-Sep-2010	3.1	F	2	647	0	79364 1	42	
67	27-Sep-2010	3.1	F	2	654	0	79364 2	42	
68	27-Sep-2010	3.1	F	2	717	21	79364 3	52	
69	27-Sep-2010	3.1	F	2	683	590	79364 4	42	
70	27-Sep-2010	3.1	F	1	676	0	79364 5	42	
71	27-Sep-2010	3.1	M	2	588		79365 1	42	
72	27-Sep-2010	3.1	F	3	626	0	79365 2	42	

Fish #	Date	Reach	Sex	Condition	POHL (mm)	# Eggs Retained	Fish Sample	Age (Gilbert-Rich)	Comments
73	27-Sep-2010	3.1	F	3	629	0	79365 3	42	
74	27-Sep-2010	3.1	M	1	648		79365 4	42	
75	27-Sep-2010	3.1	F	2	584	0	79365 5	42	
76	27-Sep-2010	3.2	F	2	667	1	79366 1	42	
77	27-Sep-2010	3.2	F	1	728	0	79366 2	52	
78	27-Sep-2010	3.2	F	1	592	0	79366 3	42	
79	27-Sep-2010	3.2	F	2	568	0	79366 4	42	
80	27-Sep-2010	3.2	F	3	681	26	79366 5	42	
81	28-Sep-2010	3.2	F	1	628	0	79367 1	42	
82	28-Sep-2010	3.2	F	1	674	0	79367 2	42	
83	28-Sep-2010	3.2	F	2	628	0	79367 3	42	
84	28-Sep-2010	3.2	F	2	546	0	79367 4	2M	
85	28-Sep-2010	3.2	M	1	684		79367 5	42	
86	28-Sep-2010	3.2	M	1	581		79368 1	42	
87	28-Sep-2010	3.2	M	1	680		79368 2	42	
88	28-Sep-2010	3.2	F	1	598	0	79368 3	42	
89	28-Sep-2010	3.2	F	1	634	0	79368 4	42	
90	28-Sep-2010	3.2	M	1	642		79368 5	42	
91	28-Sep-2010	3.2	F	3	605	0	79369 1	42	
92	28-Sep-2010	3.2	F	3	628	1	79369 2	42	
93	28-Sep-2010	3.2	F	1	654	39	79369 3	2M	
94	28-Sep-2010	3.2	F	1	626	0	79369 4	42	NF - 606 mm
95	28-Sep-2010	3.2	M	1	486		79369 5	32	
96	28-Sep-2010	3.2	M	2	619		79370 2	42	
97	28-Sep-2010	3.2	F	1	665	0	79370 1	42	
98	28-Sep-2010	3.2	F	2	607	0	79370 3	42	
99	28-Sep-2010	3.2	F	3	630	Unspawned	79370 4	42	Fully skeined
100	28-Sep-2010	3.2	F	2	608	0	79370 5	42	
101	29-Sep-2010	3.2	F	2	646	21	79371 1	42	
102	29-Sep-2010	3.2	F	2	619	0	79371 2	42	
103	29-Sep-2010	3.2	F	1	586	0	79371 3	42	
104	29-Sep-2010	3.2	F	2	533	0	79371 4	42	
105	29-Sep-2010	3.2	F	2	553	19	79371 5	42	
106	29-Sep-2010	3.2	F	3	608	0	79372 1	42	
107	29-Sep-2010	3.2	F	1	598	0	79372 2	2M	
108	29-Sep-2010	3.2	F	3	637	0	79372 3	42	
109	29-Sep-2010	3.2	F	2	693	0	79372 4	42	

Fish #	Date	Reach	Sex	Condition	POHL (mm)	# Eggs Retained	Fish Sample	Age (Gilbert-Rich)	Comments
110	29-Sep-2010	3.2	F	3	598	0	79372 5	42	
111	29-Sep-2010	3.2	F	1	640	6	79373 1	42	
112	29-Sep-2010	3.2	F	3	618	0	79373 2	42	
113	29-Sep-2010	3.2	M	2	697		79373 3	42	
114	29-Sep-2010	3.2	M	1	586		79373 4	42	
115	29-Sep-2010	3.2	M	3	660		79373 5	42	
116	2-Oct-2010	11	F	3	610	0	79374 1	42	
117	2-Oct-2010	11	F	3	759	0	79374 2	52	
118	2-Oct-2010	11	F	2	677	0	79374 3	42	
119	2-Oct-2010	11	F	1	586	0	79374 4	42	
120	2-Oct-2010	11	F	2	691	0	79374 5	42	
121	2-Oct-2010	11	F	3	709	0	79375 1	42	
122	2-Oct-2010	11	M	2	726		79375 2	42	
123	2-Oct-2010	11	M	2	665		79375 3	42	
124	2-Oct-2010	11	F	2	645	0	79375 4	42	
125	2-Oct-2010	11	F	2	677	0	79375 5	42	
126	2-Oct-2010	11	F	1	662	0	79376 1	42	
127	2-Oct-2010	11	F	1	651	0	79376 2	2M	
128	2-Oct-2010	11	F	1	610	0	79376 3	42	
129	2-Oct-2010	11	F	3	656	0	79376 4		
130	2-Oct-2010	11	M	2	627		79376 5	42	
131	2-Oct-2010	11	F	2	620	0	79377 1	42	
132	2-Oct-2010	11	F	3	593	0	79377 2	42	
133	2-Oct-2010	11	F	3	624	0	79377 3	42	
134	2-Oct-2010	11	F	2	585	0	79377 4	42	
135	2-Oct-2010	11	F	2	670	0	79377 5	42	
136	2-Oct-2010	11	F	3	672	0	79378 1	42	
137	2-Oct-2010	11	F	3	650	0	79378 2	42	
138	2-Oct-2010	11	F	2	660	0	79378 3	42	
139	2-Oct-2010	11	F	1	641	0	79378 4	S2	
140	2-Oct-2010	12	F	1	645	0	79378 5	42	
141	2-Oct-2010	12	F	2	595	0	79379 1	42	
142	2-Oct-2010	12	F	3	671	0	79379 2	42	
143	2-Oct-2010	12	F	2	650	0	79379 3	42	
144	2-Oct-2010	12	M	4	615		79379 4	42	
145	2-Oct-2010	12	F	2	565	0	79379 5	42	Preyed upon
146	2-Oct-2010	12	F	2	560	0	79380 1	42	

Fish #	Date	Reach	Sex	Condition	POHL (mm)	# Eggs Retained	Fish Sample	Age (Gilbert-Rich)	Comments
147	2-Oct-2010	12	F	3	660	0	79380 2	42	
148	2-Oct-2010	12	F	3	620	0	79380 3	42	
149	2-Oct-2010	12	F	2	680	1	79380 4	S2	
150	2-Oct-2010	12	M	2	664		79380 5	42	
151	3-Oct-2010	3.2	M	1	354		79381 1	32	NF - 425 mm
152	3-Oct-2010	3.2	M	3	745		79381 2	42	
153	3-Oct-2010	3.2	F	3	590	0	79381 3	42	
154	3-Oct-2010	3.2	F	1	680	0	79381 4	42	
155	3-Oct-2010	3.2	M	2	645		79381 5	32	
156	3-Oct-2010	3.2	F	3	622	0	79382 1	42	
157	3-Oct-2010	3.2	F	3	585	0	79382 2	42	
158	3-Oct-2010	3.2	F	2	606	4	79382 3	42	
159	3-Oct-2010	3.2	M	3	709		79382 4	42	
160	3-Oct-2010	3.2	F	3	727	0	79382 5	52	
161	3-Oct-2010	3.2	M	2	671		79383 1	42	
162	3-Oct-2010	3.2	F	2	674	3	79383 2	42	
163	3-Oct-2010	3.2	F	1	653	2	79383 3	42	
164	3-Oct-2010	3.2	F	1	720	1	79383 4	42	
165	3-Oct-2010	3.2	F	1	710	1	79383 5	42	
166	3-Oct-2010	3.2	F	1	671	0	79384 1	2M	
167	3-Oct-2010	4	F	3	690	0	79384 2	42	
168	3-Oct-2010	4	F	3	640	0	79384 3	S2	
169	3-Oct-2010	4	F	3	740	0	79384 4	52	
170	3-Oct-2010	4	M	3	655		79384 5	2M	
171	3-Oct-2010	4	F	2	691	0	79385 1	42	
172	3-Oct-2010	4	F	2	670	0	79385 2	42	
173	3-Oct-2010	4	F	3	680	0	79385 3	42	
174	3-Oct-2010	4	F	1	689	0	79385 4	52	
175	3-Oct-2010	4	F	2	695	0	79385 5	42	
176	3-Oct-2010	4	F	1	790	0	79386 1	52	
177	3-Oct-2010	4	M	3	830		79386 2	52	NF - 1020 mm
178	3-Oct-2010	4	M	2	730		79386 3	42	NF - 890 mm
179	3-Oct-2010	4	F	1	620	0	79386 4	42	
180	3-Oct-2010	4	F	1	670	0	79386 5	S2	
181	3-Oct-2010	4	F	1	620	0	79387 1	42	
182	3-Oct-2010	4	F	3	630	0	79387 2	S2	
183	3-Oct-2010	4	F	1	615	0	79387 3	42	

Fish #	Date	Reach	Sex	Condition	POHL (mm)	# Eggs Retained	Fish Sample	Age (Gilbert-Rich)	Comments
184	3-Oct-2010	4	F	1	645	0	79387 4	42	
185	3-Oct-2010	4	M	1	870		79387 5	42	
186	3-Oct-2010	4	F	2	740	0	79388 1	52	
187	3-Oct-2010	4	F	2	661	0	79388 2	52	
188	3-Oct-2010	4	M	3	684		79388 3	2M	
189	3-Oct-2010	4	M	3	630		79388 4	42	
190	3-Oct-2010	4	M	3	771		79388 5	52	NF - 991 mm
191	4-Oct-2010	16	F	2	621	0	79389 1	42	
192	4-Oct-2010	16	F	2	602	0	79389 2	42	
193	4-Oct-2010	16	F	3	605	0	79389 3	42	
194	4-Oct-2010	16	F	2	619	0	79389 4	42	
195	4-Oct-2010	16	F	3	641	0	79389 5	42	
196	4-Oct-2010	16	F	3	638	0	79390 1	42	
197	4-Oct-2010	16	F	3	622	0	79390 2	42	
198	4-Oct-2010	16	M	4	702		79390 3	52	NF - 942 mm
199	4-Oct-2010	16	F	3	593	0	79390 4	42	
200	4-Oct-2010	16	M	4	771		79390 5	52	NF - 975 mm